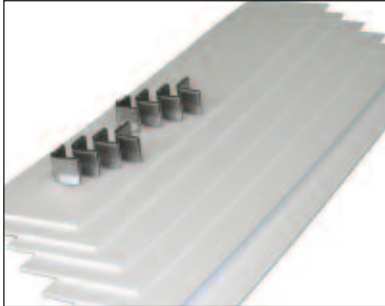


# Dividers/Trays



CP-DIV-TRAY



DIV-CC2



WDC-2025



WDC-2050



EMER-BOX

**CP-DIV-TRAY** Clear plastic divider trays (two per kit). Includes dividers. Fits in all drawers except half-sized Unicart or Medtrix drawers. 8.5" x 14" x 2"

## DIV-CC2 & DIV-CC4

Cut and clip divider systems. Simply score the plastic strips and snap them to create your own divider system. Fits in all drawers. Set includes (6) 22" long white plastic strips and 8 clips. DIV-CC2 include 2" H strips and DIV-CC4 include 4"H strips. Additional clips available in sets of 6 (DIV-CLIP, shown at left in DIV-CC2 image).

**WDC-2025** Configurable gray plastic divider tray. 2.5 inches deep, includes dividers. Fits two per drawer, and typically used in 3" and 4" deep drawers. 9.25"W x 15"D x 2.5"H

**WDC-2050** Configurable gray plastic divider tray. 4.75 inches deep, includes dividers. Fits two per drawer, and typically used in 6", 9", and 12" deep drawers. 9.25"W x 15"D x 4.75"H

**EMER-BOX** White plastic divider box with clear plastic lid. Can be sealed with plastic seal. 21.75"W x 15.75"D x 2.5"H.

**TT-1A** White plastic tray with configured bins. Can be reconfigured easily. Fits in all full sized Unicart drawers. 22"W x 15"D x 2.5"H

**TT-1B** White plastic tray with configured bins. Can be reconfigured easily. Fits in all full sized Unicart drawers. 22"W x 15"D x 2.5"H

**DIV-DRW12** Adjustable divider system with a row of ampule holders. 21.5"W x 15.25"D. To purchase this divider system for the ER2000, instant access cart, please order DIV-DRW12ER.

**DIV-DRW34** Adjustable divider system with large divided sections. 21.5"W x 15.25"D. To purchase this divider system for the ER2000, instant access cart, please order DIV-DRW34ER.

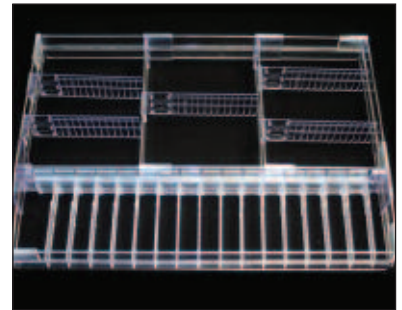
**DIV-DRW5** Adjustable divider system with large divided sections. Fits in 6, 9, 12 inch deep full sized Unicart drawers. 21.5"W x 15.25"D x 5"H. To purchase this divider system for the ER2000, instant access cart please order DIV-DRW5ER.



TT-1A



TT-1B



DIV-DRW12



DIV-DRW34



DIV-DRW5

# Dividers/Trays



**DIVTRAY-AMP**

**DIVTRAY-AMP** Ampule holder divider system with white plastic tray. Fits in all full sized Unicart drawers. 21.5"W x 15.25"D x 2.3"H



**DIVTRAY-ANES**

**DIVTRAY-ANES** Anesthesia divider system with white plastic tray. Fits in all full sized Unicart drawers. 21.5"W x 15.25"D x 2.3"H



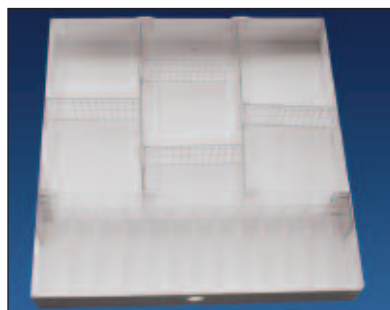
**DIVTRAY-STD**

**DIVTRAY-STD** Standard divider system with white plastic tray. Fits in all full sized Unicart drawers. 21.5"W x 15.25"D x 2.3"H. Also available in 5"H, purchase DIVTRAY-STD5.



**WMT-3**

**WMT-3** Complete ampule holder divider system with white plastic tray. Includes (3) rows of 17 ampule dividers. 21.5"W x 15.25"D x 2.3"H

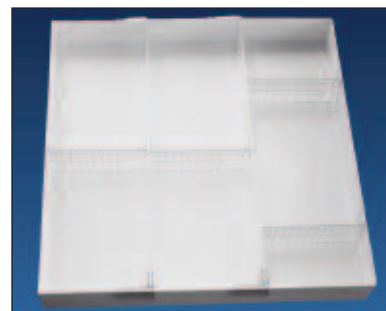


**WMT-4**

## Slim Med Junior Trays

**WMT-4** Full drawer tray with (12) ampule dividers, ampule tray, rail and (4) adjustable dividers. Fits (1) per drawer. 16"W x 16"D x 2.3"H

**WMT-5** Full drawer tray with (2) rails and (4) adjustable dividers. Fits (1) per drawer. 16"W x 16"D x 2.3"H



**WMT-5**



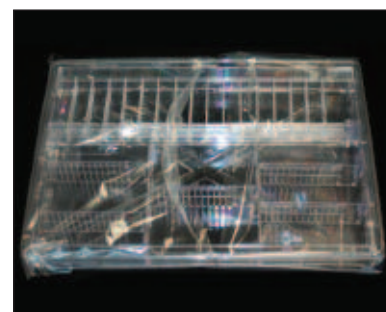
**DIV-UC6**

**DIV-UC6 & DIV-UC9** Front to back divider system for 6" or 9" Unicart drawers (Not for Med Jr. drawers). Includes 3 front to back panels to create up to 4 compartments in one drawer.



**ER-TRAY3 & ER-TRAY6**

**ER-TRAY3 & ER-TRAY6** Clear trays for Unicart & Instant access series (ER2000). For dividing systems purchase the DIV-DRW12ER, DIV-DRW34ER or DIV-DRW5ER



**BAG-3 & BAG-6**

**BAG-3 & BAG-6** Package of 20 sealable perforated bags that fit over divider trays. Dimensions: BAG-3: 23"W x 17"D x 5.5"H BAG-6: 23"W x 17"D x 7"H

**DIV-10L** Long clear plastic additional dividers for DIV-DRW12, DIV-DRW34, DIVTRAY-STD, DIVTRAY-AMP, DIVTRAY-ANES.



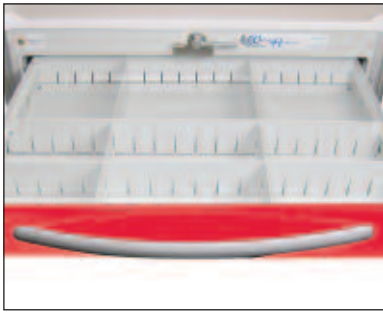
**DIV-10L & DIV-10S**

**DIV-10S** Short clear plastic additional dividers for DIV-DRW12, DIV-DRW34, DIVTRAY-STD, DIVTRAY-AMP, DIVTRAY-ANES.

*Continued on next page*



## Dividers/Trays



**DIV-AU3**



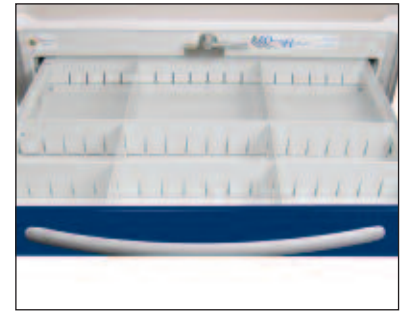
**DIV-AU6**

**DIV-AU3** Divider kit for 3" Aluminum Unicart Drawers. Includes one front-to-back and one side-to-side divider.

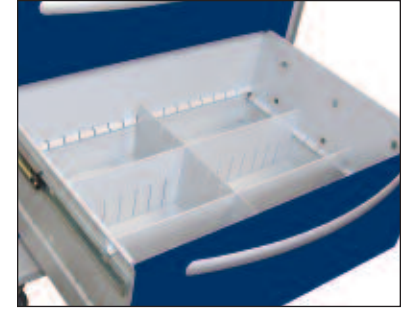
**DIV-AU6** Divider kit for 6", 9", 12" Aluminum Unicart Drawers. Includes one front-to-back and one side-to-side divider.

**DIV-AJ3** Divider kit for 3" Aluminum Med Jr Drawers. Includes one front-to-back and one side-to-side divider.

**DIV-AJ6** Divider kit for 6", 9", 12" Aluminum Med Jr Drawers. Includes one front-to-back and one side-to-side divider.



**DIV-AJ3**



**DIV-AJ6**

## Accessory Packages

**AIR-PKG** Difficult Airway (breathing) accessory package for Traditional Steel Unicarts includes: Side shelf (SSG-2C) Vertical rail system (BRS-2), Shelf for rail system (SHLF-2) Small organizer, clear with lid (ORG-1S), Two oxygen tank brackets (OTB-4).

**AIR-PKGA** Difficult Airway (breathing) accessory package for Elite Aluminum Unicarts includes: Vertical Rail System (BRS-3), Shelf for rail system (SHLF-3) Small organizer, clear with lid (ORG-1S), Two oxygen tank brackets (OTB-4).

**ANES-PKG** Standard Anesthesia accessory package for Traditional Steel Unicarts. See Page 17 (cart sold separately)

**ANES-PKGA** Standard Anesthesia accessory package for Elite Aluminum Unicarts. See Page 16 (cart sold separately)

**ANES-PKG-DLX** Deluxe Anesthesia accessory package for Traditional Steel Unicarts. See Page 17 (cart sold separately)

**ANES-PKGA-DLX** Deluxe Anesthesia package for Elite Aluminum Unicarts. See Page 16 (cart sold separately)

**EMER-PKGM** Emergency / Crash accessory package for Traditional Steel Unicarts. See Page 12 (cart sold separately)

**EMER-PKGA** Emergency / Crash accessory package for Elite Aluminum Unicarts. See Page 12 (cart sold separately)

**EMER-PKGM-DLX** Deluxe Emergency / Crash accessory package for Traditional Steel Unicarts. See Page 11 (cart sold separately)

**EMER-PKGA-DLX** Deluxe Emergency / Crash accessory package for Elite Aluminum Unicarts. See Page 11 (cart sold separately)

**INF-PKGM** Infection / Isolation accessory package for Traditional Steel Unicarts includes: Coat rack (CR-1), 2 each Utility hooks (UH-2) and Railing and supports (R-3).

**INF-PKGA** Infection / Isolation accessory package for Elite Aluminum Unicarts includes: Coat rack (CR-1), 2 each Utility hooks (UH-2) and Railing and supports (R-4).

**IV-PKG** IV accessory package for Traditional Steel Unicarts includes: IV pole and bracket (IV-2), Sharps bracket (SB-1), Tape dispenser (TD-1), Base rail system (BRS-2) and 4 compartment tilt bins (TB-4).

**PEDS-PKG** Pediatric accessory package for Traditional Steel Unicarts includes: Base rail system (BRS-2), Waste receptacle (BSK-1), IV pole and bracket (IV-2), Top shelf (SHLF-2), Side rail (2 each SR-1), Chart holder (CHT-1) Collapsible side shelf (SSG-2C), 5 compartment tilt bins (TB-5), Railing and supports (R-3).

**PEDS-PKGA** Pediatric accessory package for Elite Aluminum Unicarts includes: Base rail system (BRS-3), Top Shelf (SHLF-3), Tilt bins (TB-5), Waste container (BSK-2), Railing and supports (R-4), Chart holder (CHT-1), IV pole and bracket (IV-2), Plastic breakaway seals (PS-100), (9) 3" gatelock bar (GLB-3).

**SUT-PKG** Suture accessory package for Traditional Steel Unicarts includes: Wrap-around railing (R-3), (2) Suture shelves (SUT-1), and two Utility hooks (UH-2).